

Operation manual of MEM1300 digital eyepiece for microscope

Introduction

Congratulate for you owning the MEM1300 digital eyepiece. This Eyepiece has 1.3M pixel, it is suitable for any standard biological microscope and stereo microscope. This eyepiece can change images into digital signal, and send it to your PC, so that you can obtain, analyze the digital image and communicate with other people. Also this eyepiece can work with other tools, such as projection machine and notebook PC, thus this eyepiece makes your work easy, interesting, and more effective.

Package Contents

When first opening the packing box, please check carefully the following parts:

·MEM1300 digital eyepiece ·CD-ROM · Adaptor ring for stereo microscope ·USB2.0 Cable

Compatibility of hardware and software

MEM1300 and the software of Future Win Joe attached are of compatibility with 32 bit and 64 bit Windows 32bit and 64bit, XP, Vista, Win7, Win8, Win10, Mac. The combination of MEM1300 USB camera and Future Win Joe offers an excellent solution to micrography.

MEM1300 also can run in Linux system to capture pictures and movies with some free download imaging software such “Cheese” (www.projects.gnome.org/cheese/)

MEM1300 is available to run in MAC (version 10.7.5. or above) with the software “photo booth” attached acting as a PC camera to capture pictures and video in resolution 640*428.

System Requirements in Windows

Module	CPU	RAM	USB	Operating System
0.1MP	PIII800HZ or above	128M or above	USB 1.0	WinXP\Vista\
0.35MP	PIII800HZ or above	256M or above	USB 2.0	WinXP\Vista
1.3MP	PIV1.4GHZ or above	512M or above	USB 2.0	WinXP\Vista\Win7\Win8\Win10\Mac
2.0MP	PIV1.8GHZ or above	512M or above	USB 2.0	WinXP\Vista\Win7\Mac 10.4
3.0MP	PIV2.0GHZ or above	1G or above	USB 2.0	WinXP\Vista\Win7
5.0MP	PIV2.4GHZ or above	2G or above	USB 2.0	WinXP\Vista\Win7

- 32-bit color display at 1024x768 (64 MB video memory)
- DirectX 9.0 or higher

Driver Installation

MEM1300 is designed in UVC project, so there is no driver program to be installed. But before running it must be recognized by the PC.

To connect Digital Eyepiece

Before connecting Digital Eyepiece to your PC, please confirm that the **USB2.0 interface** on your PC is all right.

- Take out one optic eyepiece of the using Microscope, put in the digital eyepiece.
- Connect the **USB2.0 cable** of the Digital Eyepiece to your PC
- “*Find a new hardware—*” of your PC screen

The “*hardware wizard*” window displays. The driver is installed.

Install software of Future Win Joe

1. Put the CD into the CD-ROM, the files of CD will be shown on the screen automatically.

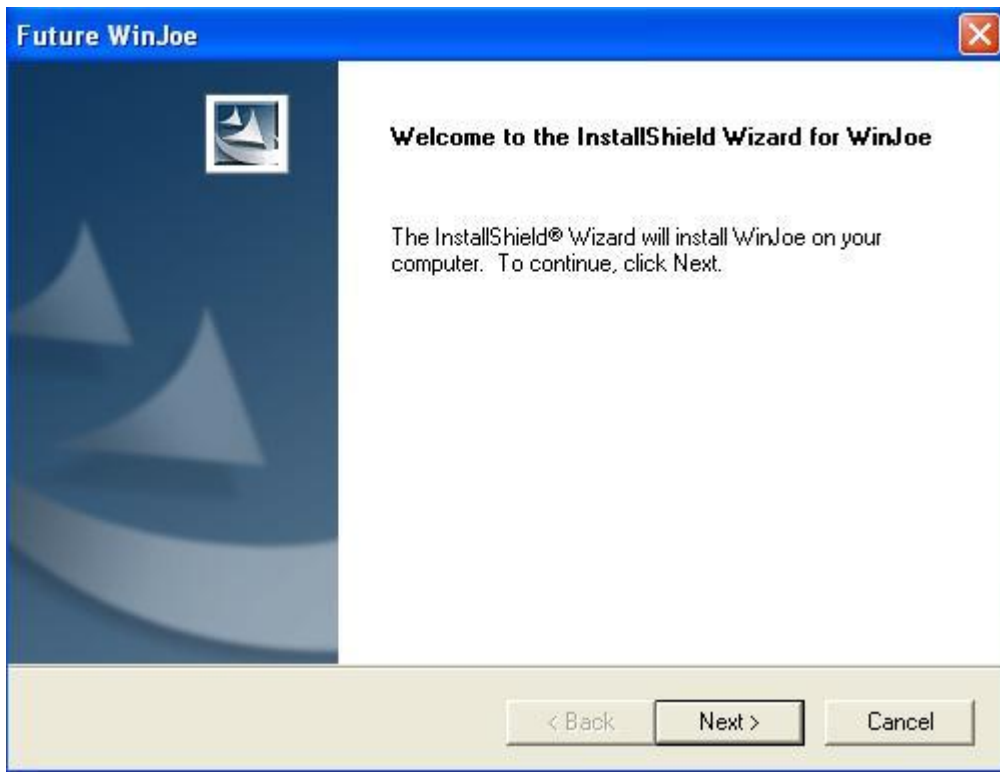
Notice: If the CD-ROM can not run automatically, please double click “My computer” then click the CD with right key, or double-click “setup” under the folder of “software” of CD.

2. Click “Install Future Win Joe” option.

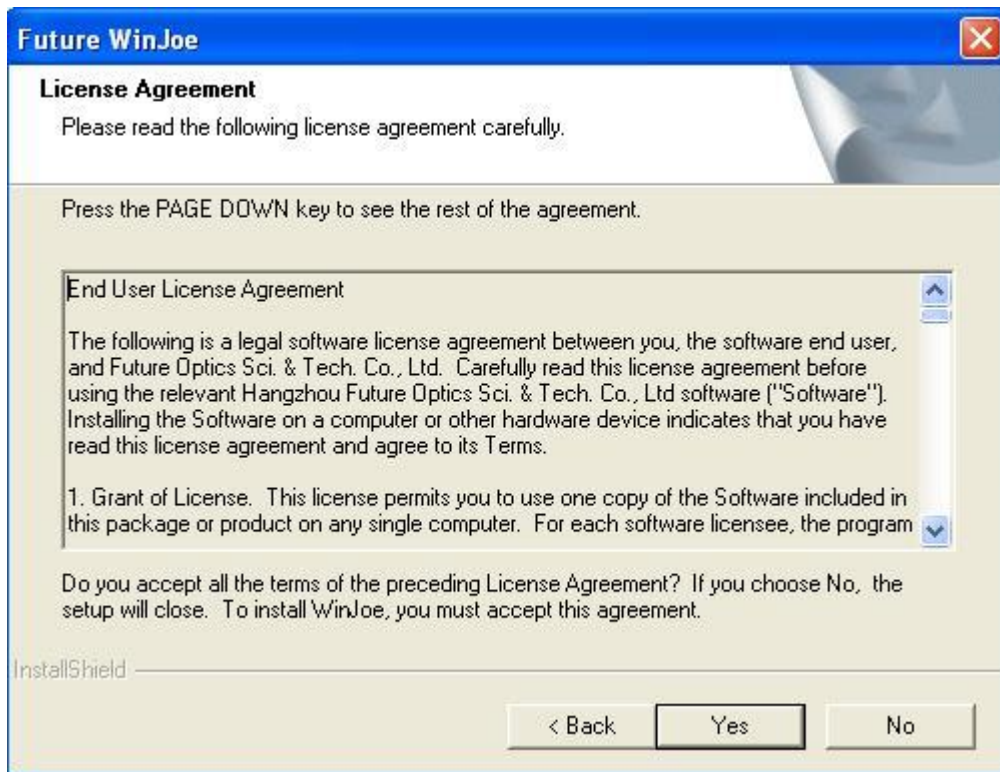
3. Select your language, then click “OK” to confirm



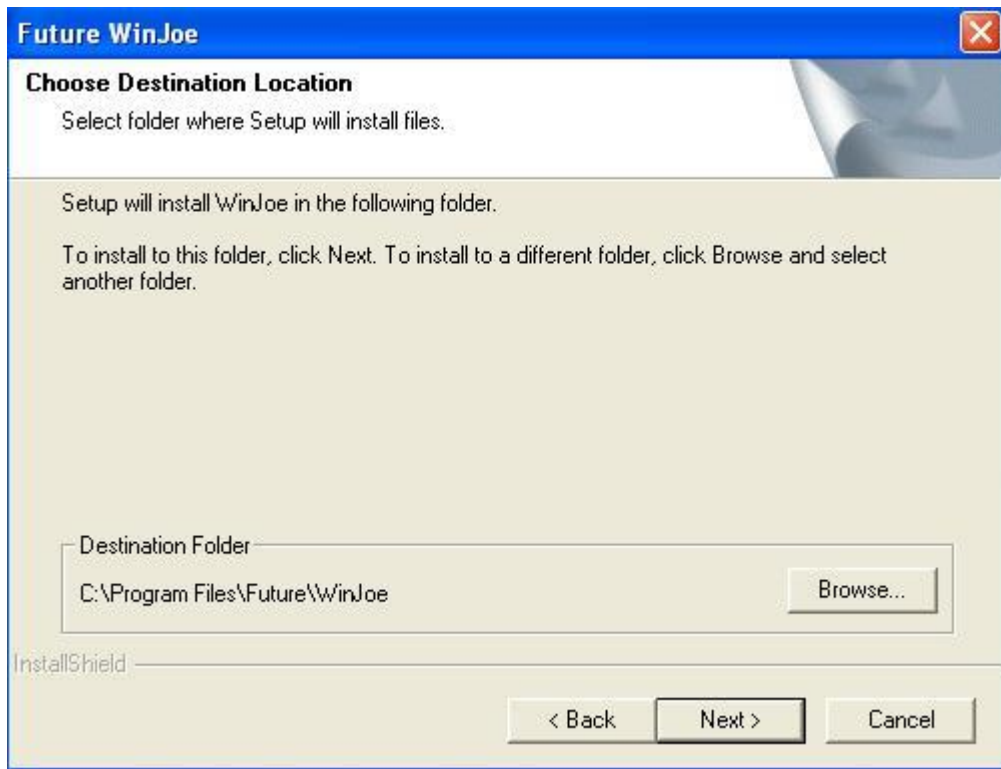
4. Come to the welcome wizard interface, click “next” to continue.



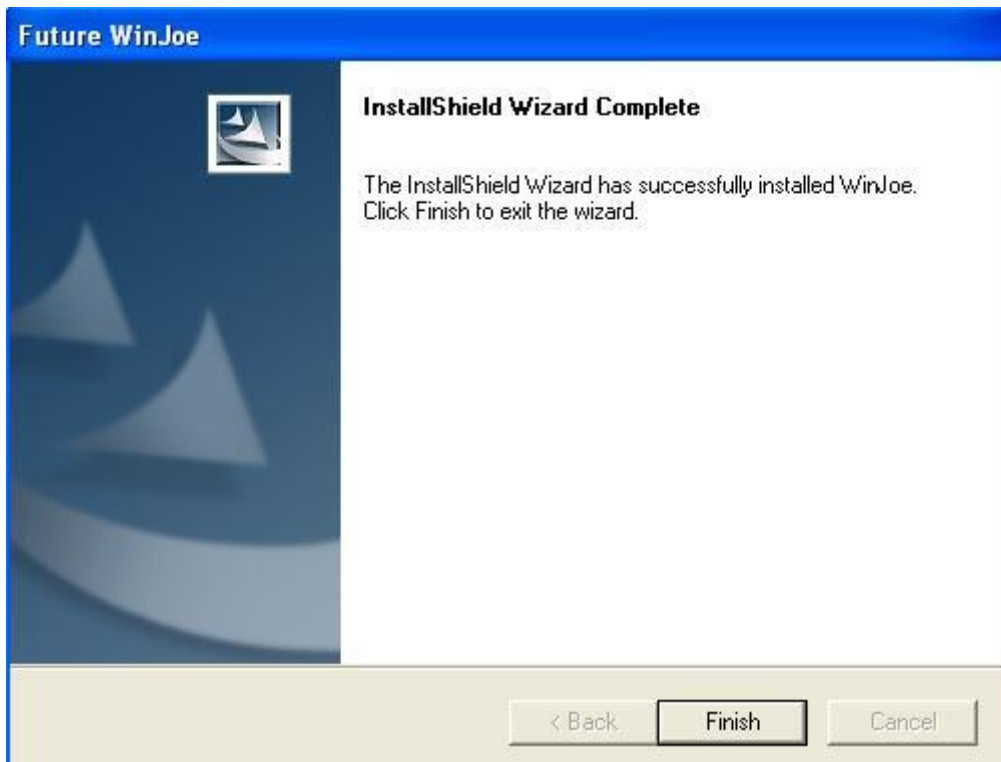
5. You must accept the user license agreement, so please click "yes" to continue.



6. Select the destination folder to place the icon of Future Win Joe, the default location is "C:\Program Files\Future\WinJoe", of course, you can change it to the destination folder you want to click "Browse"



7. Install shield wizard has been installed on your computer, click "finish" to exit.



Operation of Future Win Joe

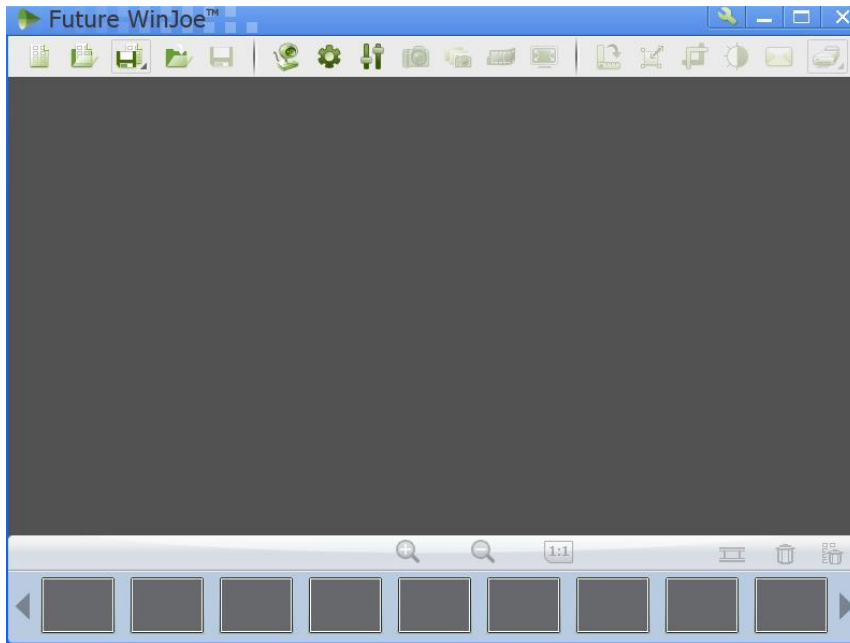
1. Connect the digital device to the USB port,



2. Double click icon on desktop "Future WinJoe".

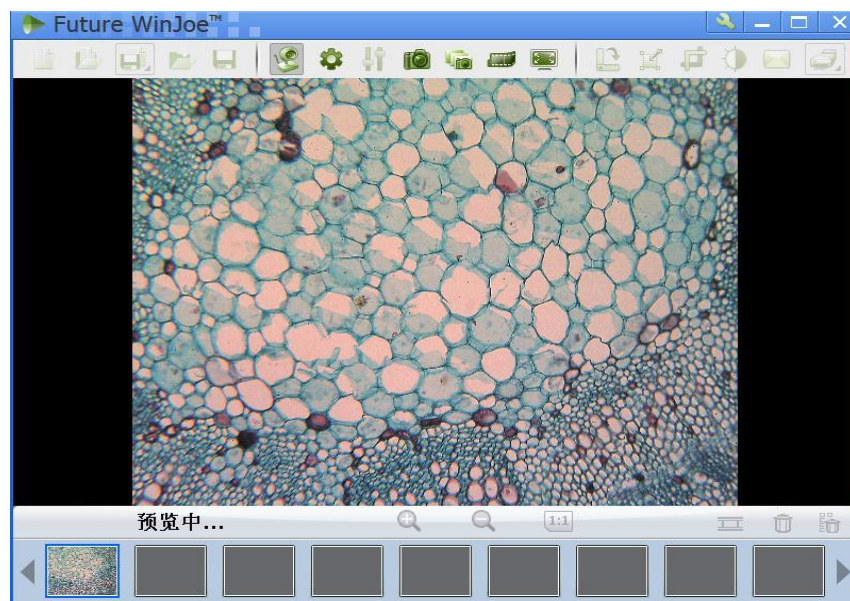
3. There are two main parts in the interface: up-part for alive image showing and the down-part for list of

images captured






4. Click"  " to let digital device capture images

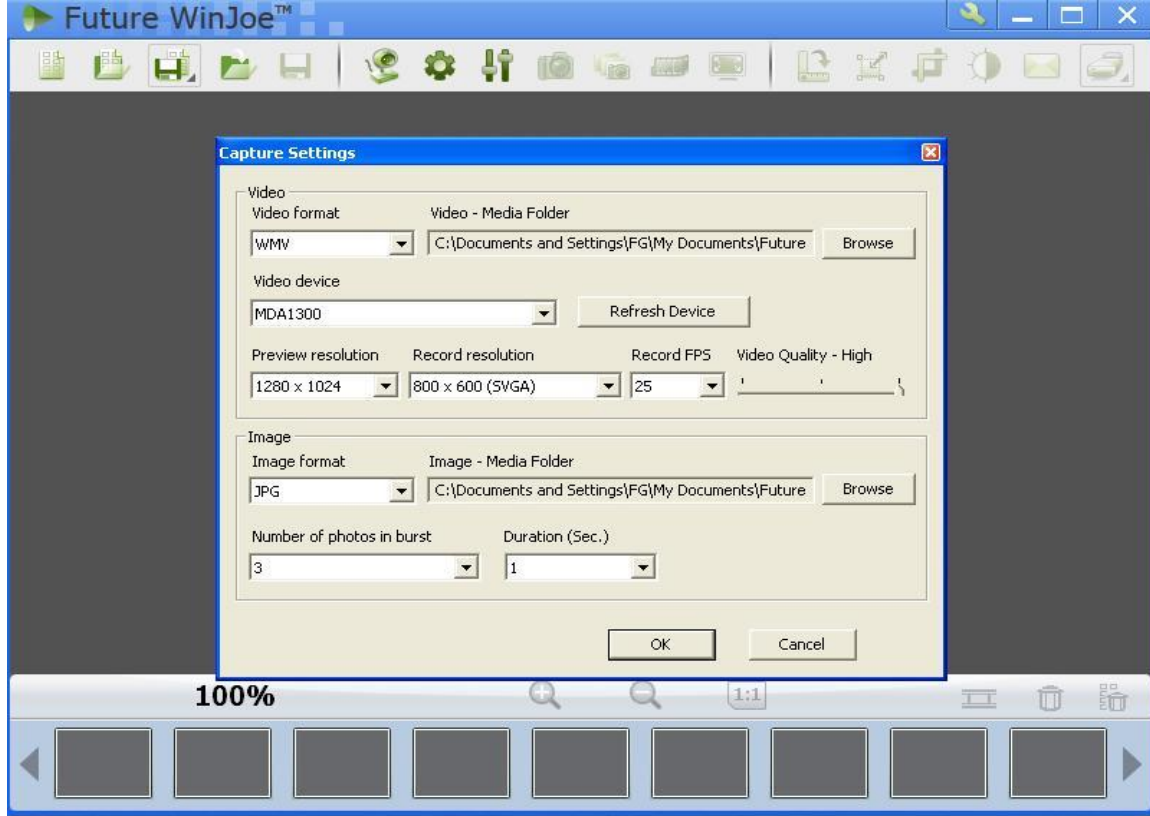
5. In this manual, we display biologic microscope and digital eyepiece, please adjust the focus-nob of a microscope to get a clear image.




6. Before capture, please set the destination folder for saving image files.

7. Click"  ", to set the attributes of images shown, including brightness, contrast and so on.

8. By click"  ", you can get a table of "capture setting" and by changing the related value, and click  again to turn on capturing, you can view images with new specifications



9. Click  to start video capturing, and click again to stop.

10. In order to view the pictures you have captured, you should click the pictures and videos in the list

area below. After viewing, to click  to start another capture

11.



11. To know more detailed other functions, please click "Help" or "F1"