

KITS Versions Usage & FAQ

This document details recommended usage of the various versions of the KITS software and Frequently Asked Questions (FAQ).

Some FAQs may be common to all versions.

KITS VERSIONS USAGE & FAQ.....	1
1 KITS 3.02.....	2
RECOMMENDED USE.....	2
FAQ – INSTALLATION ISSUES	2
1.1.1 What are the pre-requisites for installation?	2
1.1.2 I receive the Microsoft Excel message “This workbook has lost its VBA project, Active X controls and any other programmability-related features”	2
1.1.3 I Can’t See any KITS menus	2
1.1.4 KITS can’t find my power meter.	2
FAQ - OTHER.....	3
1.1.5 The data logging graph does not self scale on the x axis	3
1.1.6 My two way memory dump only shows loss testing data for the first wavelength.....	3
1.1.7 My saved files are very large, about 1 Meg in size.....	3
1.1.8 During setup I receive the error message’...no useful data...’	3
1.1.9 I can’t manually enter test data.	3
1.1.10 Where is the help or user manual?	3
2 KITS 3.03.....	4
RECOMMENDED USE.....	4
FAQ – INSTALLATION ISSUES	4
2.1.1 What are the pre-requisites for installation?	4
2.1.2 Can I have multiple versions of office?	4
2.1.3 I can’t see any KITS menus.	4
2.1.4 KITS can’t find my power meter.	5
2.1.5 When starting Excel for normal use I get the warning message ‘KIAddin’ ‘Connection Old format or invalid type library’ message.	5
FAQ - OTHER.....	5
2.1.6 When opening KITS I receive an ActiveX warning message	5
2.1.7 When closing KITS I receive a VBE pop up error message which won’t go away.	5
2.1.8 During setup I receive the error message’...no useful data...’	6
2.1.9 Where is the help or user manual?	6
3 KITS 4.0.....	7
RECOMMENDED USE.....	7
FAQ – INSTALLATION ISSUES	7
3.1.1 What are the pre-requisites for installation?	7
3.1.2 KITS can’t find my power meter.	7
FAQ - OTHER.....	8
3.1.3 I Can’t See any KITS menus	8
3.1.4 Where is the help or user manual?	8
3.1.5 During setup I receive the error message’...no useful data...’	8
4 KITS 4.10.....	9
RECOMMENDED USE.....	9
FAQ – INSTALLATION ISSUES	9
4.1.1 What are the pre-requisites for installation?	9
4.1.2 KITS can’t find my power meter.	9
FAQ – OTHER.....	10
4.1.3 During setup I receive the error message’...no useful data...’	10

1 KITS 3.02

Recommended use

Up to 2 wavelengths
Source & Meter
Simple LTS
LTS in two-way Autotest mode

FAQ – Installation Issues

1.1.1 What are the pre-requisites for installation?

You must be an Administrator or power user. Microsoft Visual Basic for Applications (VBA) and active X must be enabled.

1.1.2 I receive the Microsoft Excel message “This workbook has lost its VBA project, Active X controls and any other programmability-related features”

The Microsoft Visual Basic for Applications (VBA) shared feature is disabled. KITS requires Active-X controls, add-in programs and Microsoft Visual Basic to operate.

To re-enable VBA:

- Run the Office Setup program
- Select ‘Add or Remove Features’
- Select ‘Choose advanced customisation of applications’
- On the Features to install screen in the Setup program, select ‘Office Shared Features’.
- Locate & select Visual Basic for Applications
- Select run from My Computer.
- Select ‘Update’

Note that there may be slight differences in the enabling procedure depending upon your version of Excel.

1.1.3 I Can't See any KITS menus

KITS 3.02 requires the use of macros and Active X. Ensure macros are enabled in Excel. Depending upon your security settings you may also be required to accept several warning displays during KITS start-up re giving permission to run Active X and macros.

1.1.4 KITS can't find my power meter.

It is assumed that the power meter is turned on and that computer interface leads are in good order.

- Windows requires that the USB-serial driver be individually installed on each dedicated USB port.

FAQ - Other

1.1.5 The data logging graph does not self scale on the x axis

Use KITS 3.03 or later if you require the inbuilt data logging graph to self scale on both axis. Alternatively the saved data can be used to create a graph of your own choosing from the inbuilt Excel graphical templates.

1.1.6 My two way memory dump only shows loss testing data for the first wavelength.

KITS 3.02 does not support memory dump of two-way loss testing data. If this is required, you must use KIT 3.03 or later.
Alternatively, the memory can be downloaded direct in to the loss testing report sheet.

1.1.7 My saved files are very large, about 1 Meg in size.

If you use the standard EXCEL [File] – [Save] or [Save As], KITS saves the data plus all formulas thus creating a large file.

Unless you have a need for this, the recommended method is to use the save function built into the added KITS menus.

1.1.8 During setup I receive the error message '...no useful data...'

KITS has been set up for one way testing. The meter has been configured to be located at the source end. Move the meter to the other end.
For example, to loss test from B->A, the source must be located at the 'B' end and the meter must be at the 'A' end.

1.1.9 I can't manually enter test data.

By default in Version 3.02, manual entry of test data is turned off. Go to [Kingfisher] – [Preferences] and select 'Allow manual entry of test data' you will be prompted for a password. Unless you have a compelling reason for a password, click enter.
Manual data entry is now enabled.

1.1.10 Where is the help or user manual?

KITS features a comprehensive inbuilt help file in both HTML & word format.

- Select drop down menu item [Kingfisher] located on top LHS.
- Choose [User Manual (word)] or [User Manual (HTML)]
- The third way to bring out help (in HTML format) is from the help button (the last on the right of the Kingfisher menu bar.

Alternatively navigate to the word or HTML User Guides located in the installation directory. Typically; C:\Program Files\Kingfisher\KITS

2 KITS 3.03

Recommended use

Up to 2 wavelengths
LTS in two-way Autotest mode
Data logging with Auto ranging inbuilt graph
Memory dump 2 wavelengths

FAQ – Installation Issues

2.1.1 What are the pre-requisites for installation?

To install KITS, you must be logged into the computer using the administrator profile, or other profile with local administrator rights.

Before installation, first ensure that the following programs are installed: -

- .net Framework v1.1 (free download from Microsoft) and service packs
- .net Framework Language Pack (free download from Microsoft)
- Microsoft Office 2000 or later (Excel is required).

The .net framework and service packs may have been automatically installed as part of Windows updates.

To check: Start / Settings / Control Panel / Add-Remove Programs / look for "Microsoft .net Framework...."

2.1.2 Can I have multiple versions of office?

It is preferable that multiple versions of Office should not be installed.

If this is unavoidable then the steps are:

1. Decide which version of Office is to be associated with KITS
2. Click Add/Remove Programs,
3. Locate KITS and press the Change button
4. Choose the Modify option and press Next till the screen "Select the program features you want installed" is displayed
5. Make sure only the following features for only one Office version are enabled:-
 - Addin for Office – only designated version selected,
 - Forms for Office - only designated version selected
 - Components for Office - only designated version selected
6. Complete the wizard
7. Then run Repair

2.1.3 I can't see any KITS menus.

KITS 3.03 requires Microsoft .net framework Version 1.1. Check your system to see if it is installed. You can have more than one version installed at the same time. If it is not installed, uninstall KITS before installing .net Framework v1.1.

2.1.4 KITS can't find my power meter.

It is assumed that the power meter is turned on and that computer interface leads are in good order.

- Windows requires that the USB-serial driver be individually installed on each dedicated USB port.
- During start up KITS will show an initial splash screen saying that it is 'Searching for compatible power meter...'. If it does not find the PM or if you do not have a power meter connected at the time, click on the splash screen to enter the application. Go straight to Tools \ Add-ins and tick the 'Kiforms' box. You only need to do this on initial installation. This will allow the units to fully interface with the software when later connected

2.1.5 When starting Excel for normal use I get the warning message 'KIAddin' 'Connection Old format or invalid type library' message.

CAUSE

You receive this error calling an Excel method when the following conditions are true:

- You run an English version of Excel. However, the regional settings for the computer are configured for a non-English language.

If the client computer runs the English version of Excel and the locale for the current user is configured for a language other than English, Excel will try to locate the language pack for the configured language. If the language pack is not found, the error is reported.

WORKAROUND

To work around this problem, you can use one of the following methods:

- Install the Multilingual User Interface Pack for your version of Office.
- Change the regional settings to English

FAQ - Other

2.1.6 When opening KITS I receive an ActiveX warning message

This is normal

2.1.7 When closing KITS I receive a VBE pop up error message which won't go away.

This is a known KITS bug which is corrected in later versions. To quickly remove the VBE error message, on closing, hold down 'Esc' until the pop up message disappears.

2.1.8 During setup I receive the error message '...no useful data...'

KITS has been set up for one way testing. The meter has been configured to be located at the source end. Move the meter to the other end. For example, to loss test from B->A, the source must be located at the 'B' end and the meter must be at the 'A' end.

2.1.9 Where is the help or user manual?

KITS features a comprehensive inbuilt help file in both HTML & word format.

- Select drop down menu item [Kingfisher] located on top LHS.
- Choose [User Manual (word)] or [User Manual (HTML)].
- The third way to bring out help (in HTML format) is from the help button (the last on the right of the Kingfisher menu bar.

Alternatively navigate to the word or HTM User Guides located in the installation directory. Typically; C:\Program Files\Kingfisher\KITS

3 KITS 4.0

Recommended use

Interim release to be superseded by KITS 4.11

Greater than 2 wavelengths

LTS in two-way Autotest mode

Data logging with Auto ranging inbuilt graph

Memory dump 2 or more wavelengths.

FAQ – Installation Issues

3.1.1 What are the pre-requisites for installation?

a) Office 2003 and Office 2007. Either or both may be installed

b) KB907417 Update for Office 2003

Microsoft has released an update for Microsoft Office Excel 2003 and for Microsoft Office Word 2003. This update corrects a potential problem in which an add-in, a smart tag, or a smart document may not load if it uses the Microsoft .NET Framework 2.0.

c) You need .Net Framework 2.0 on Windows XP or the installation will fail with this error

Error 1935. An error occurred during the installation of assembly component

- {8C306A7E-AE8E-14F0-4168-C43060985CF4}
- HRESULT: 0x8002802F

- A more explicit warning on the absence of the .net framework prevents the installation from succeeding on windows vista.
- As the one setup must work on both windows XP and windows Vista a more explicit message is not possible.

d) Configuration for Office 2003

1. In Control Panel, Add/Remove Programs click Microsoft Office and press Change button.
2. Select Add or Remove Features and click Next button.
3. Tick Choose Advanced customisation of applications and click Next
4. Under Microsoft Office, Microsoft Office Excel, .NET Programmability Support should be enabled
5. under Office Tools, Microsoft Forms 2.0 .NET Programmability Support should also be enabled

3.1.2 KITS can't find my power meter.

It is assumed that the power meter is turned on and that computer interface leads are in good order.

- Windows requires that the USB-serial driver be individually installed on each dedicated USB port.

FAQ - Other

3.1.3 I Can't See any KITS menus

KITS 4 requires Microsoft .net framework Version 2 or 3. Check your system to see if one of these is installed. You can have more than one version installed at the same time.

See also pre-requisite requirements.

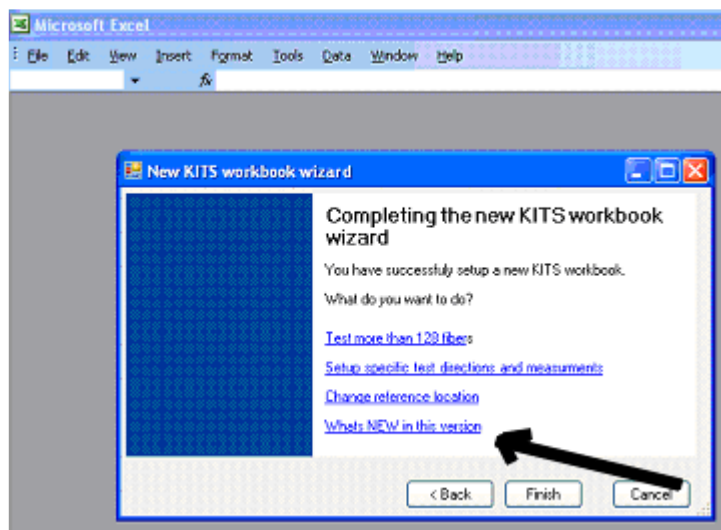
3.1.4 During setup I receive the error message '...no useful data...'

KITS has been set up for one way testing. The meter has been configured to be located at the source end. Move the meter to the other end.

For example, to loss test from B->A, the source must be located at the 'B' end and the meter must be at the 'A' end.

3.1.5 Where is the help or user manual?

This is located via the setup wizard. The last workbook wizard screen has a menu item entitled "Whats NEW in this version". Selecting this option will bring up the help menu.



4 KITS 4.10

Recommended use

All KI7000 series meters

Release date: Beta expected mid December 2007

FAQ – Installation Issues

4.1.1 What are the pre-requisites for installation?

a) Office 2003 and Office 2007. Either or both may be installed

b) **KB907417 Update for Office 2003**

Microsoft has released an update for Microsoft Office Excel 2003 and for Microsoft Office Word 2003. This update corrects a potential problem in which an add-in, a smart tag, or a smart document may not load if it uses the Microsoft .NET Framework 2.0.

c) **You need .Net Framework 2.0 on Windows XP or the installation will fail with this error**

Error 1935. An error occurred during the installation of assembly component

- {8C306A7E-AE8E-14F0-4168-C43060985CF4}
- HRESULT: 0x8002802F
- A more explicit warning on the absence of the .net framework prevents the installation from succeeding on windows vista.
- As the one setup must work on both windows XP and windows Vista a more explicit message is not possible.

d) **Configuration for Office 2003**

1. In Control Panel, Add/Remove Programs click Microsoft Office and press Change button.
2. Select Add or Remove Features and click Next button.
3. Tick Choose Advanced customisation of applications and click Next
4. Under Microsoft Office, Microsoft Office Excel, .NET Programmability Support should be enabled
5. under Office Tools, Microsoft Forms 2.0 .NET Programmability Support should also be enabled

4.1.2 KITS can't find my power meter.

It is assumed that the power meter is turned on and that computer interface leads are in good order.

Possible causes are

- If a USB-serial driver is being used, is its driver software installed on all USB ports?

FAQ – Other

4.1.3 During setup I receive the error message '...no useful data...'

KITS has been set up for one way testing. The meter has been configured to be located at the source end. Move the meter to the other end.

For example, to loss test from B->A, the source must be located at the 'B' end and the meter must be at the 'A' end.

- To help avoid this message, consider displaying the inbuilt test summary layout diagram. Toggle [Setup], [Show Test Summary]