

# KI 6600 Series FiberSafe Microscope General Features



Revision: 2

## Compact, Light Weight, Reliable

Compact, versatile and easy to use, this reliable microscope is perfect for use by all your fiber technicians.

## Superior Image Quality!

The microscope family offers superior image quality in the industry.

In combination with many other useful features, this easily contributes to better installations, productivity and staff morale.

## Tripod Mount

The unit can be mounted on a tripod for the great conveniences of users.



## Stable LED illumination with timer

The long life LED is very reliable, and illumination level is constant over battery life. The timer means that the user doesn't have to continually depress an actuating button.

## Built-in Eye Safety Filters

Critical eye protection is greatly improved over previous designs, and includes VFL protection.

Maximum eye safe power in accordance with IEC60825-2 is clearly labelled.

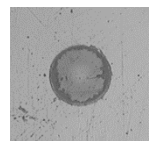


**RED & INFRARED SAFETY FILTERS FITTED**  
Max eye safe input limits:-  
635-800 nm: +20dBm  
800-1650 nm: +30dBm  
IEC60825-2 Ed. 3.1  
Damage Level +30dBm  
MODEL: [ ]  
Patent Pending  
Made in Australia  
CE, RoHS, ISO 9001

## Triple-mode Illumination

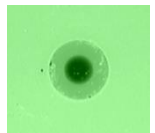
- Coaxial mode:

Maximizes the detail seen by users.



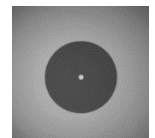
- Oblique mode:

For better visibility on surface debris or contamination



- Core mode:

Shows details of the fiber core, or for continuity testing.



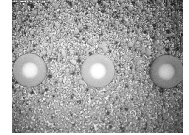
### Optional USB Camera

Replace eye piece with the camera to facilitate image viewing & storage on PC.



### Ribbon Fiber Capable

Adaptors are available for ribbon fiber connectors MPO/MTP of both PC & APC types, and excellent image quality is obtained.



### Micro-USB power input

External power via min USB connector.



### LED Light

In-built LED source for core illumination, also makes a simple continuity tester.



### Long Battery Life

1x AAA alkaline (LR03) battery work for up to 300 hours.



### Screw-on Adaptors

High quality connector adapters are easily compatible with a wide range of optional connector types, refer to [Kingfisher Website](#) for detail.



### Easy Image Centering, Focus Mechanisms

Focusing and image centering is achieved with just 3 easily accessed knobs.



### Other Features

- x200 or x400 magnification versions
- Carry strap & soft carry case as standard accessories
- 3-year standard warranty
- Low battery indication
- Made in Australia

AUTHORIZED DEALER